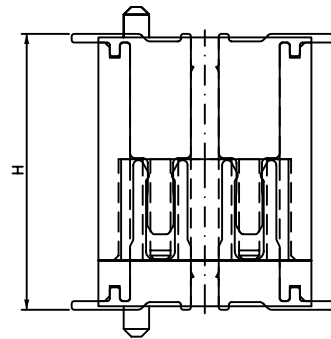
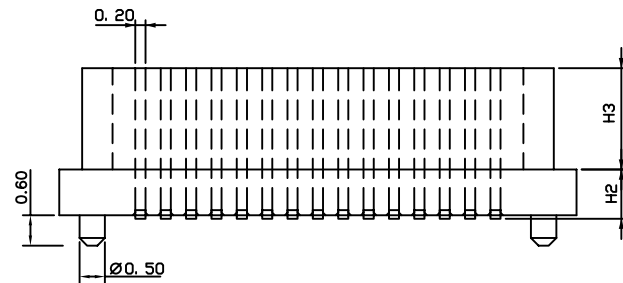
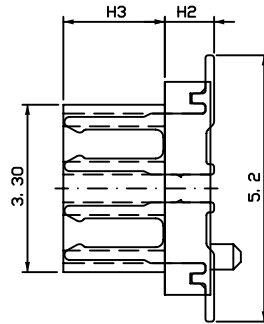
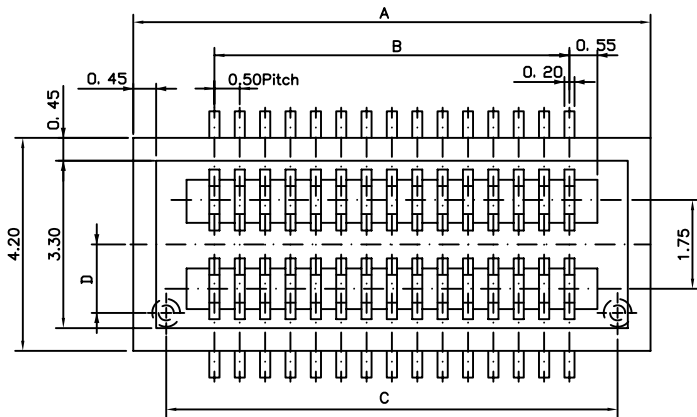
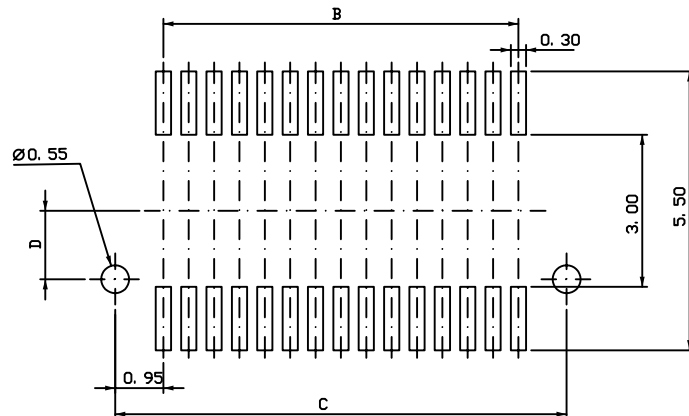


Board to Board Connector 0.5mm Pitch Socket Series

LTR	REVISION	DATE	NAME



ASSEMBLED



P. C. B LAYOUT

Specification

- 1. Ratings**
 Rated Current : 0.5A
 Rated Voltage : 50V(rms)/DC
 Operating Temperature : -25°C - +85°C
- 2. Electrical Performance**
 Contact Resistance : 40mΩ Max.
 Insulation Resistance : 100 MegaΩ Min.
 Dielectric Strength : 250V AC(rms).
- 3. Mechanical Performance**
 Insertion Force : 120gram/pin Max.
 Withdrawal Force : 20gram/pin Min.
 Terminal/Housing Retention Force : 0.1Kg. Min.

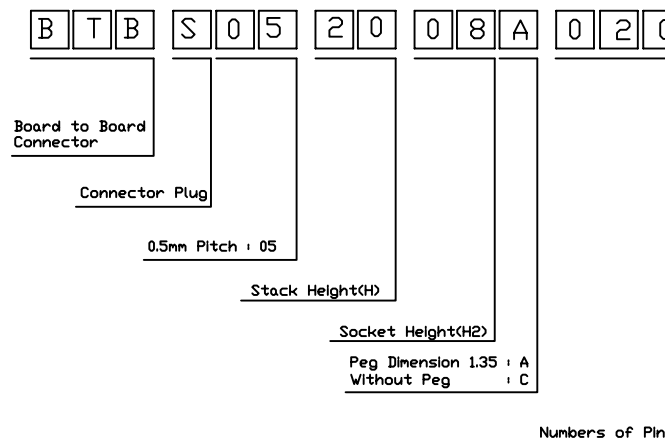
Dimension H & H1			
HIGH(H)	PLUG(H1)	SOCKET(H2)	SOCKET(H3)
2.0	1.4	0.6	0.9
2.5	1.9	0.6	0.9
3.0	2.0	1.0	1.0
3.5	2.5	1.0	1.0
4.0	3.0	1.0	2.0
4.5	3.5	1.0	2.0
5.0	4.0	1.0	2.0
5.5	4.5	1.0	2.0
6.0	5.0	1.0	2.0
6.5	4.5	2.0	2.0
7.0	5.0	2.0	2.0
7.5	4.5	3.0	2.0
8.0	6.0	2.0	2.0
9.0	6.0	3.0	2.0

Applications

Small Portable Equipment, GSM Equipment
 Mobile Phone, PDA, MP3, MP4, DSC, PMP, LCD
 Digital Camera, Digital Audio, Note PC, etc

Dimension			
PIN	A	B	C
10P	5.2	2.0	3.9
12P	5.7	2.5	4.4
14P	6.2	3.0	4.9
16P	6.7	3.5	5.4
18P	7.2	4.0	5.9
20P	7.7	4.5	6.4
22P	8.2	5.0	6.9
24P	8.7	5.5	7.4
26P	9.2	6.0	7.9
28P	9.7	6.5	8.4
30P	10.2	7.0	8.9
32P	10.7	7.5	9.4
34P	11.2	8.0	9.9
36P	11.7	8.5	10.4
38P	12.2	9.0	10.9
40P	12.7	9.5	11.4
42P	13.2	10.0	11.9
44P	13.7	10.5	12.4
46P	14.2	11.0	12.9
48P	14.7	11.5	13.4
50P	15.2	12.0	13.9
60P	17.7	14.5	16.4
70P	20.2	17.0	18.9
80P	22.7	19.5	21.4
90P	25.2	22.0	23.9
100P	27.7	24.5	26.4
120P	32.7	29.5	31.4

Order Information



Dimension between Peg and Center Line	
No.	Dimension D
A	1.35
C	without Peg